



COMOX VALLEY
**CONSERVATION
PARTNERSHIP**

Community-based Watershed Stewardship

Tim Ennis – Executive Director – Comox Valley Land Trust

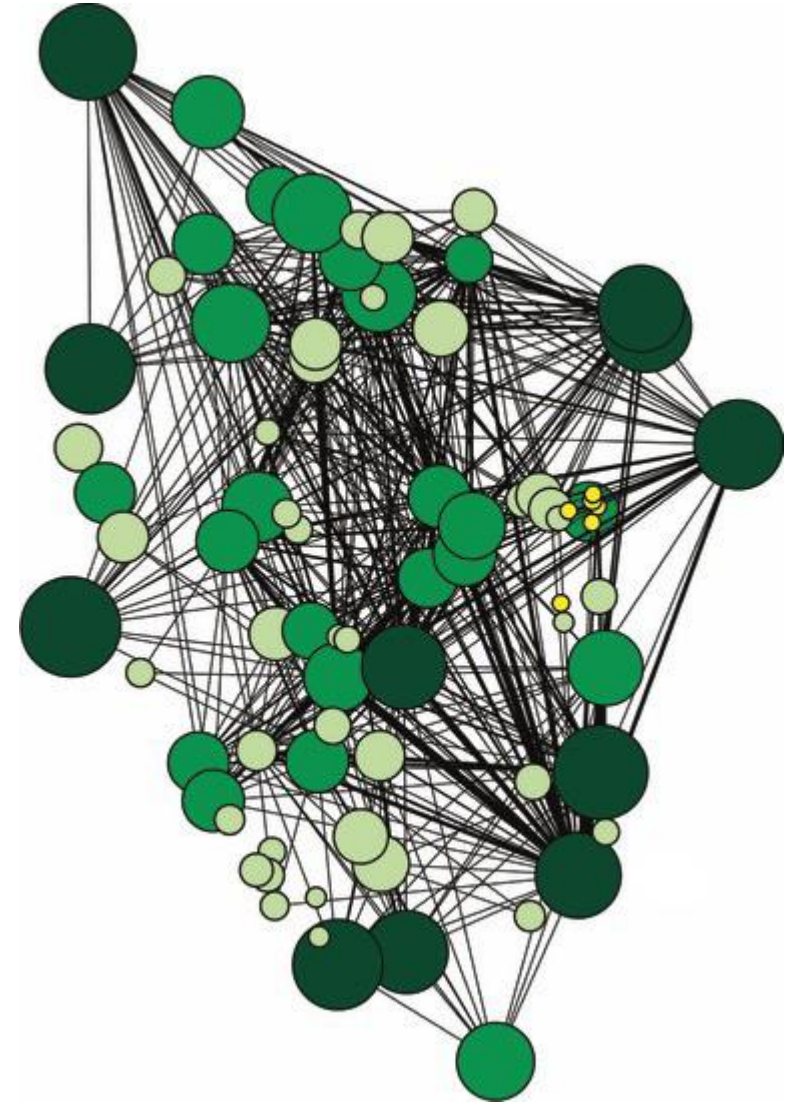




COMOX VALLEY
**CONSERVATION
PARTNERSHIP**

Strategic Plan 2019-2022

- Expand our Conservation Toolbox
- **Watershed Protection:**
- Protect Sensitive Ecosystems and Species
- Partnership coordination and policy development
- Eco-asset valuations
- Environmental Information and Research
- Outreach and Education





COMOX VALLEY
**CONSERVATION
PARTNERSHIP**

Strategic Plan 2019-2022

Watershed Protection:

- a. *Protect key drinking water supply areas, including groundwater supply;*
- b. *Continue to engage in the Integrated Watershed Management approach for the Comox Lake watershed;*
- c. *Encourage an eco-asset valuation approach to watershed protection, and;*
- d. *Support watershed management planning.*





COMOX VALLEY CONSERVATION PARTNERSHIP



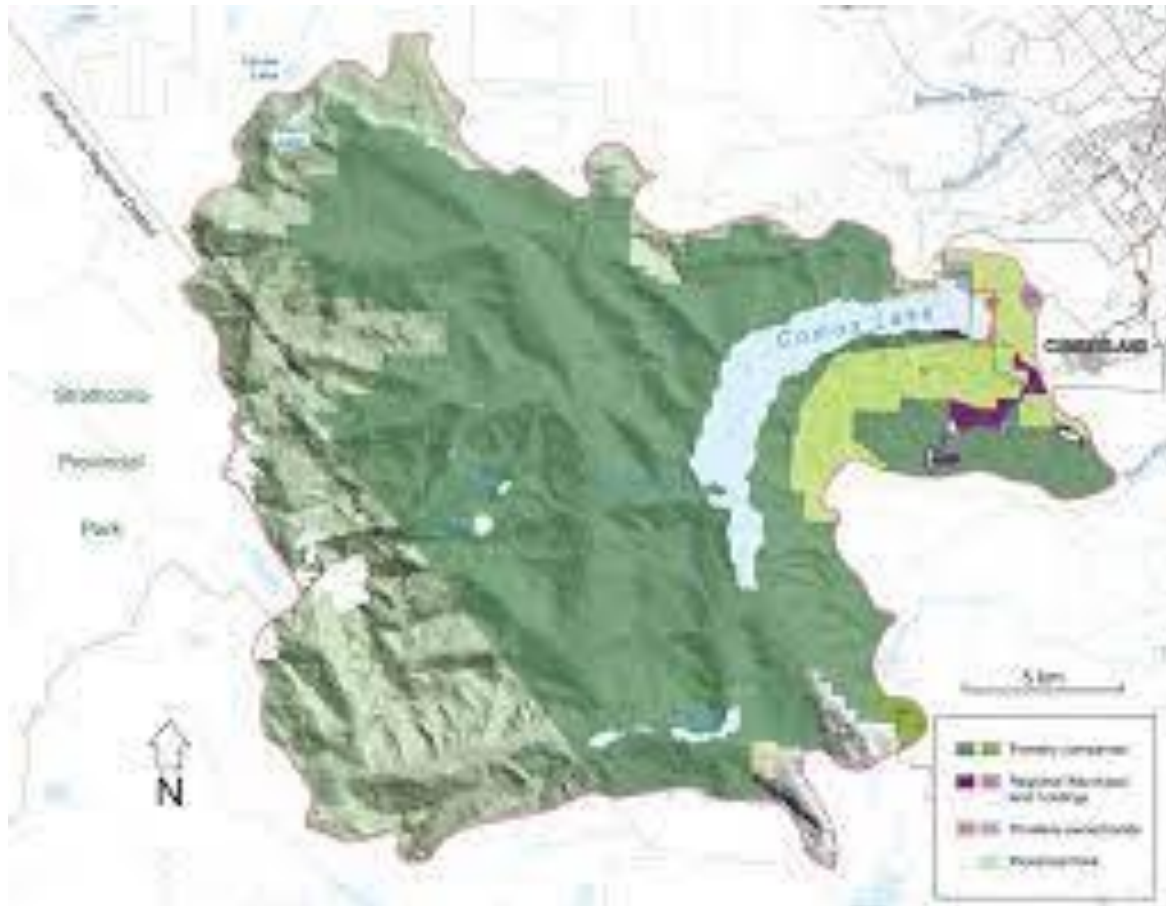
*Protect key drinking water supply areas, including groundwater supply.
Example: **Project Perseverance.***





COMOX VALLEY CONSERVATION PARTNERSHIP

*Continue to engage in
the Integrated Watershed
Management approach for
the Comox Lake watershed;*





COMOX VALLEY
**CONSERVATION
PARTNERSHIP**



*Encourage an eco-asset
valuation approach to
watershed protection;*





COMOX VALLEY
**CONSERVATION
PARTNERSHIP**

*Support
watershed
management
planning.*

